

STYLEPARK

Architecture > 2016 > March

Working at the Schumanns

21 March 2016

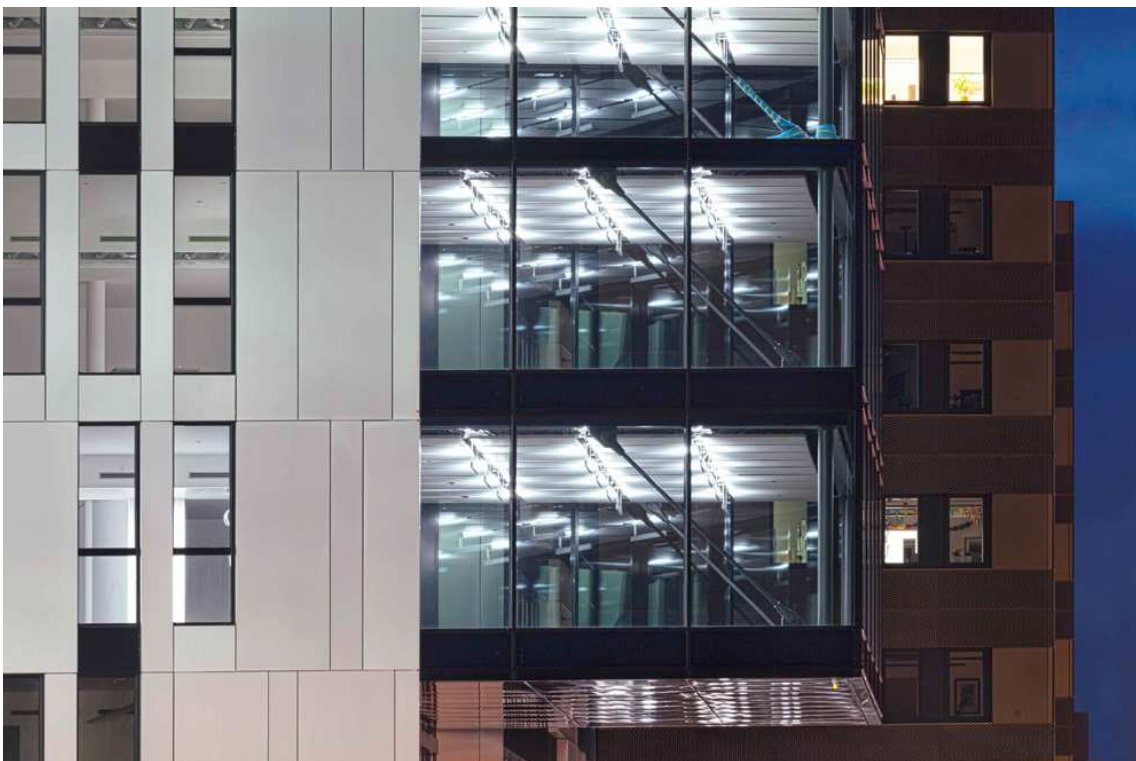
Composer Robert Schumann, at the time Municipal Director of Music in Düsseldorf, and his wife Clara gave their names to an office building in Düsseldorf designed by Sop Slapa Oberholz Pszczulny. “Clara und Robert” stand for the two sections of the building: the four-storey Saarhaus, a venerable old building made of yellow brick, and the seven-story new build, which with its metal façade protectively frames its older counterpart. Luminaires by ADO Lights, the leading brand by TTC Timmler, dip the historical frontage in atmospheric light and in the interior also provide efficient lighting exactly where it is required.

“Clara und Robert” are located on a corner site of the former Ulanenkaserne barracks. Although new, sleek commercial and residential houses have been erected, the district exudes a rough industrial charm as shaped by the former Rheinmetall AG factory, the Schlösser Brauerei and the old abattoir; the slotted aluminum façade of the new office build is correspondingly “cool”, its striking protrusions framing the front of the modernized Saarhaus. A well-conceived lighting concept for the historical façade illuminates it to great effect and does justice to the dignity of the old building: Flush-mounted light lines from ADO Lights in the floor and door frame direct attention to the entrance, offer visitors guidance, and deliver homogeneous light without visible LED dots to set the tone brightly.

The architects have positioned wall-washers from the “LED Drainlight” line beneath the window frames, and with custom-adjustable beams emphasize the red sandstone sills to conjure up a moody interplay of light and shadow. Inside, primarily monochrome and purist single-cell, group and open-plan offices provide a total of no less than 19,000 square meters of space. The sensor-controlled luminaires from the “LED Around” line enable staff to concentrate on their work, as the luminaires adjust automatically to the level of daylight and thus support natural biorhythms. Moreover, programmable “swarm switches” and integrated motion detectors ensure light is used only when needed and thus no energy wasted. Indeed, the rectangular pendant luminaires provide very even lighting for the meeting rooms with the long conference tables, radiating light both upwards and downwards. (sb)



Clara and Robert in Düsseldorf: The new building by Slapa Oberholz Pszczulny Architekten builds a frame for the historical Saarhaus with its bearing-out façade.
Photo © ADO Lights by TTC Timmler Technology GmbH / photographer Peter von Pigage



Inside, 19.000 square meters offer many space for offices.
Photo © ADO Lights by TTC Timmler Technology GmbH / photographer Peter von Pigage



This way: Integrated LED light lines by ADO Lights serve as optical guidance system, focusing the visitor's eye on the entrance.

Photo © ADO Lights by TTC Timmler Technology GmbH / photographer Peter von Pigage



Less is more: Cool elegance dominates the offices and also the entrance with glass front of the new building is puristical and clearly arranged.

Photo © ADO Lights by TTC Timmler Technology GmbH / photographer Peter von Pigage



In the conference rooms, the dimmable pendant luminaire “LED-Around” gives homogeneous light with a color temperature of 4.100 kelvin, without glare.

Photo © ADO Lights by TTC Timmler Technology GmbH / photographer Peter von Pigage



Smart lighting at the office: The free standing luminaire “LED Around” offers light, adapted to the natural daylight, thanks to its sensors. Thanks to presence sensors and the “swarm” function, no energy is wasted.

Photo © ADO Lights by TTC Timmler Technology GmbH / photographer Peter von Pigage



Filligree shape and homogeneous light: The pendant luminaire “LED Linargo” offers indirect light up and direct light down. At night, the luminaire switches to indirect light.
Photo © ADO Lights by TTC Timmler Technology GmbH / photographer Peter von Pigage



Due to the transparent lighting fixture, the pendant luminaire “LED Around” appears especially lightweight. LED spots are integrated into the glass as micro-prisms and are almost invisible.
Photo © ADO Lights by TTC Timmler Technology GmbH / photographer Peter von Pigage



Convincing technology: The pendant luminaire “LED Linargo” offers power consumption of 50 watt and an economic lifetime of 50.000 hours.

Photo © ADO Lights by TTC Timmler Technology GmbH / photographer Peter von Pigage