
PROJECT

Etihad Towers
Abu Dhabi

CLIENT | ARCHITECT
Sheikh Suroor Projects Department (SSPD) | DBI Design, Australia

Products

- 150 m² TTC doormats model Public SGCB
with grooved rubber inset and cassette-brush
for exterior
- 150 m² TTC sandtraps
- 80 metres LED frames 30.22 with LED Lightline



DOORMATS WITH LED FRAME
Entrance area



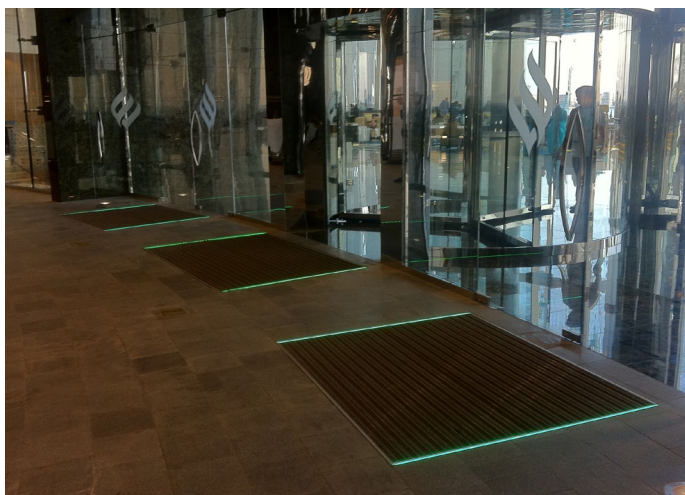
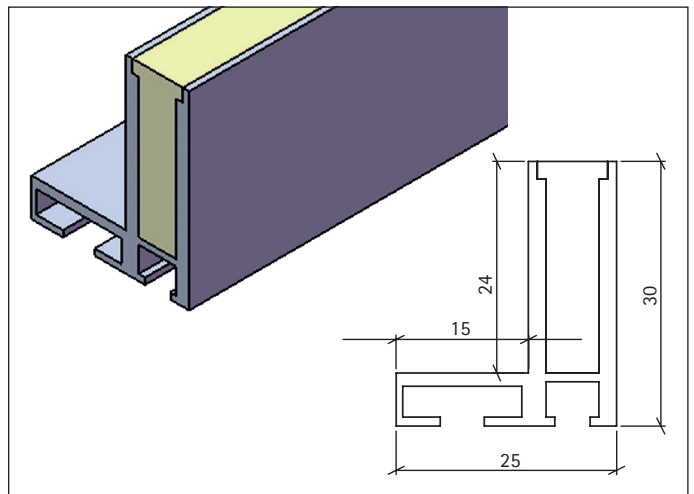
DOORMATS WITH LED FRAMES

LED Frame 30.22

Lighting frames with LED Lightlines presents entrance areas in the proper light because the filigree frames are eminently suitable as a design and guiding element in combination with doormats and dust-trap zones.

Features

- Energy-saving
 - For interior and exterior
 - Flush with surface
 - Recessed luminaire fully moulded
 - Profile in aluminium
- Safe to walk on; safe to drive over for vehicles with air-filled tires
 - Light colours monochrome or RGB/multicolour; all colours, blended colours, colour gradients, changing colours and dynamic lighting scenes educible
 - Control panel from user-friendly small application to implementation in building automation systems
 - Compatible to all interfaces in combination with electronic ballasts, e. g. DMX512, EIB, Dali etc.
 - Underwater installation up to max. 3 m with corresponding waterproofed sealing of connections



DOORMAT WITH LED FRAMES

Mats with soil absorption tubs and sandtrays

TTC Public SGCB with grooved rubber inset and cassette-brush for outside areas

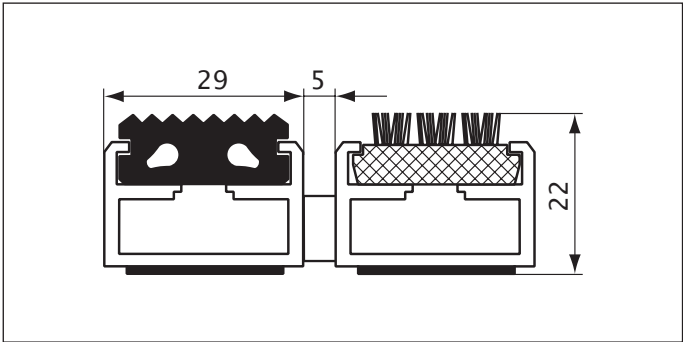
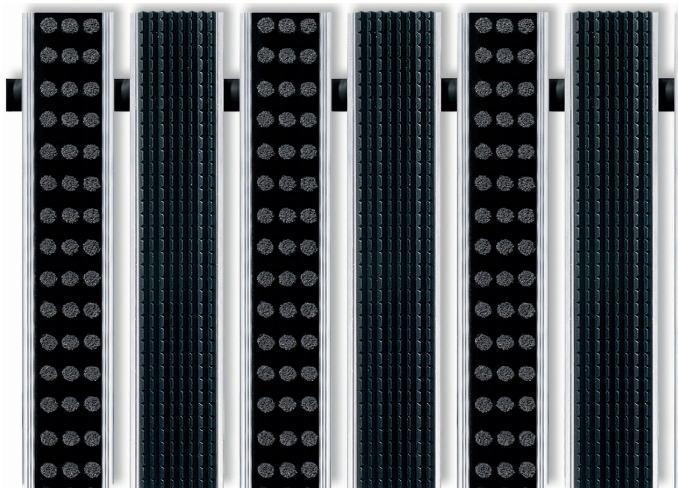
Roll-up doormat, especially reinforced and loadable for frequently used entrances in the outside area.

- Colour of rubber inset: black
- Colour of cassette-profile: black
- Farbe des Bürstensatzes: grau

TTC Soil absorption tubs and sandtrays

Absorption tub constructions are composed of tubs in one or several pieces ariable in depth and width and allows a modular construction.

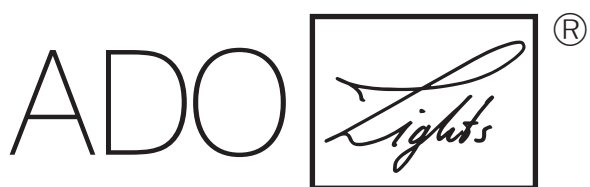
- Entireley made of aluminium
- Width of material 2 mm, welded design
- Surrounding channel
- Surrounded with wall ancors every 500 mm



Type	Spacer Width	Matting Height	Frame Height
SGCB 22	5 mm	22 mm	25 mm
SGCB 42	5 mm	42 mm	46 mm



TTC Timmler Technology GmbH
Christian-Schäfer-Straße 8
D-53881 Flammersheim [Cologne/Bonn]
T +49 2255 9212-00
F +49 2255 9212-99
E info@ado-lights.com
I www.ado-lights.com
www.led-luc.com



by TTC Timmler Technology

