
PROJECT

Mittlerer Pfad
Stuttgart

CLIENT

APOprojekt GmbH, Stuttgart | SvR Lichttechnik GmbH, Hamburg

Lighthouse in a business park

For an existing building in a Stuttgart business park, the task was to guide a filigree LightLine as a visual highlight from the horizontal to the vertical. In this way, both the building with its striking tower and the path from the street via the staircase to the main entrance are staged in a structured way.

The LightLines embedded in the façade pilaster strip are taken up again at a second entrance, but here without the horizontal path.



LED-LIGHTLINE + LED-SPOTLIGHTS

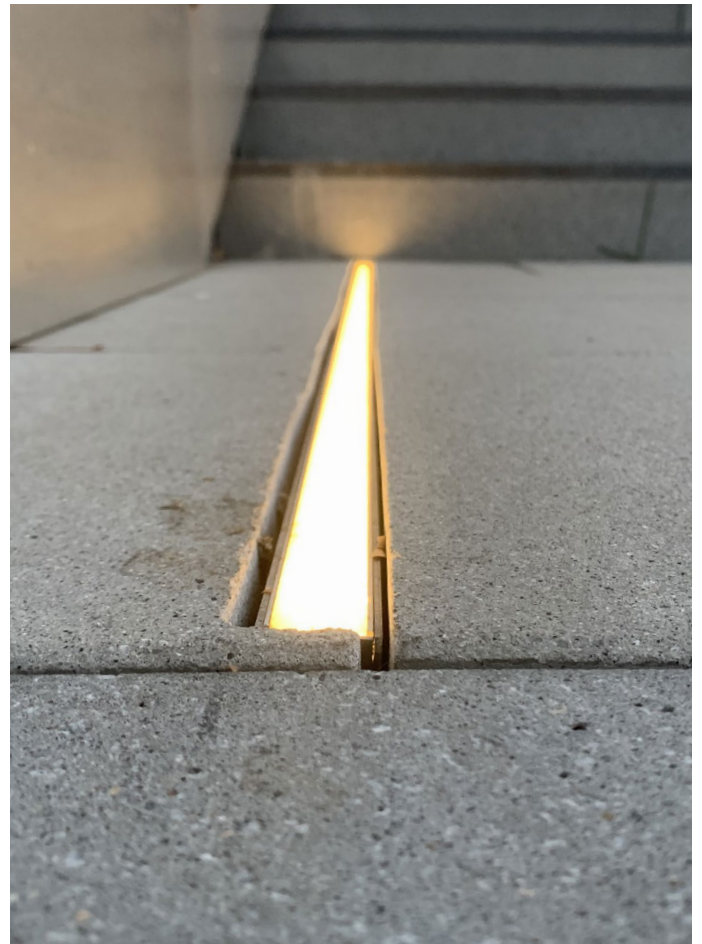
Guidance, façade illumination + entrance lighting

LED-LightLines

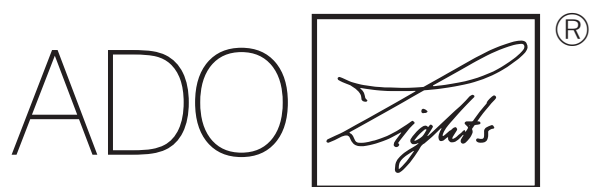
- Approx. 85 m surface-mounted LED-LightLines type LLF 20.40, 20x40 mm [WxH], installed in façade pilaster strip, natural anodised aluminium U-profile, opaque moulded, homogeneous light spread without dark spots at divisions, LED white 3,000 K, 9,6W/rm, IP68, dimmable
- Approx. 45 m LED-LightLine type LLF 20.25, 20x25 mm [WxH], recessed in floor, natural anodised aluminium U-profile, opaque moulded, homogeneous light spread without dark spots at divisions, LED white 3,000 K, 9,6W/rm, IP68, dimmable, mounting profile made of stainless steel with asymmetrical base plate for use in paved areas

Surface-mounted LED-Luminaires

- 13 units surface-mounted LED luminaires type Canvas 2, black housing, gold-coloured reflector, LED white 3,000 K, 15W



TTC Timmler Technology GmbH
Christian-Schäfer-Straße 8
D-53881 Flammersheim [Cologne/Bonn]
T +49 2255 9212-00
F +49 2255 9212-99
E info@ado-lights.com
I www.ado-lights.com
www.led-luc.com



by TTC Timmler Technology

