



sop Architekten, Düsseldorf | die developer, Düsseldorf | Fotografier: Peter von Pigage

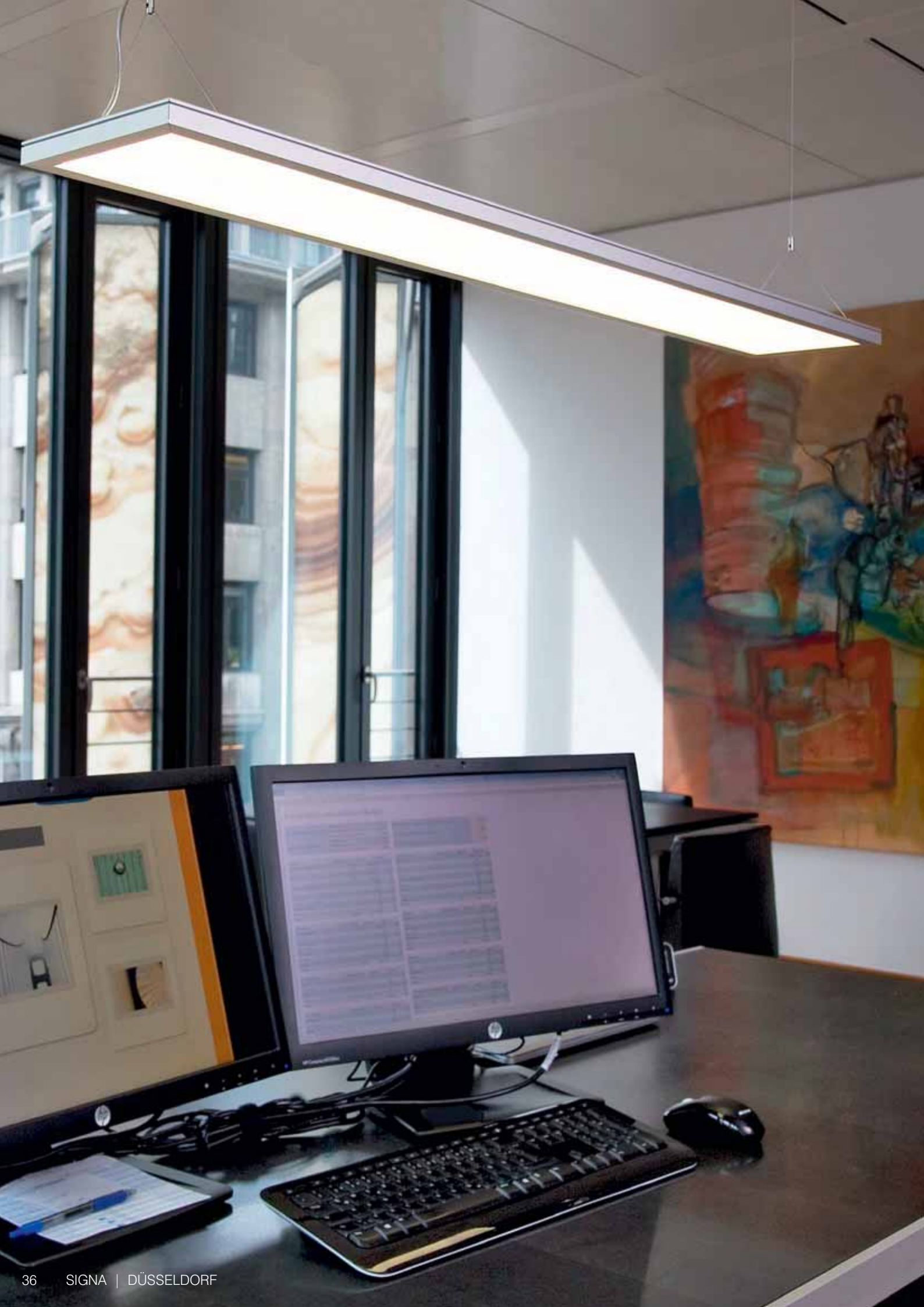
---

# LED-AROUND

---

Pendant Luminaire  
Standing Luminaire  
Wall Luminaire  
Custom Built





# LED-AROUND

## Pendant Luminaire

---

### BASE INFORMATION



---

### LED-Around | Light in all directions

Combining sophistication and efficiency. Upward and downward light radiation. Ensures homogeneous, glare-free illumination. Fully transparent when switched off. LED Around is useful everywhere, in offices and administrative buildings, in show rooms and private residences.

Whether above work benches, desks, conference or dining tables, in production areas or at home: As a pendant luminaire LED Around provides homogeneous, pleasant illumination and is infinitely dimmable.

In long and extra-long version the luminaire is stabilized by minimalistic PMMA separators made of aluminium which become invisible, when the luminaire is switched on, so a homogeneous light spread is given.

### Features

- For offices, showrooms, hotels, laboratories, shop floors and private residences
- Suitable for emergency lighting systems according to EN 50172
- Narrow light colour tolerances
- Direct/indirect light extraction; optional direct light extraction with reflector
- Perfect homogeneous light spread
- Glare-free
- Steplessly dimmable and suitable to VDU workstations



# LED-AROUND

Clara + Robert,  
Düsseldorf

---

CLIENT | ARCHITECT

die developer, Düsseldorf | sop slapa oberholz pszczulny architekten, Düsseldorf

---



# LED-AROUND

## Pendant Luminaire

### GENERAL TECHNICAL SPECIFICATIONS



<b>DIMENSIONS [L X W X H]</b>	<p>HEAD [STANDARD]: 1,210 x 200 x 20 mm</p> <p>HEAD [LONG]: 1,830 x 200 x 20 mm</p> <p>HEAD [EXTRA-LONG]: 2,430 x 200 x 20 mm</p> <p>TRANSFORMER CASING: 190 x 140 x 40 mm</p>	<b>CRI</b>	<p>CRI &gt; 85</p> <p>Narrow colour tolerance MacAdam Step 3</p>
<b>POWER CONSUMPTION</b>	90 W   135 W [long]   180 W [extra-long]	<b>NORM/PERFORMANCE</b>	<p>UGR &lt; 19   L65 &lt; 1.500 cd/m<sup>2</sup></p> <p>according to EN 12464-1:2011</p>
<b>LUMINOUS FLUX</b>	<p>HEAD [STANDARD]: Module efficiency 110 lm/W direct/indirect 4,342 lm/2,895 lm At 100 % direct 7,237 lm Nominal luminous flux 9,650 lm</p> <p>HEAD [LONG]: Module efficiency 110 lm/W direct/indirect 6,534 lm/4,356 lm At 100 % direct 10,890 lm Nominal luminous flux 14,520 lm</p> <p>HEAD [EXTRA-LONG]: Module efficiency 110 lm/W direct/indirect 8,710 lm/5,810 lm At 100 % direct 14,520 lm Nominal luminous flux 19,360 lm</p>	<b>CONTROL INTERFACE</b>	DALI DEVICE Typ 6, DSI, switch DIM with memory function, corridorFUNCTION
<b>OPERATING VOLTAGE</b>	Low voltage to 48V DC	<b>IP RATING</b>	IP20
<b>SERVICE LIFE</b>	LED 50,000 hours at 70% of mean luminous flux	<b>LUMINAIRE HOUSING</b>	Aluminium natural or black anodised Other colours upon request
<b>COLOUR TEMPERATURE</b>	White   3,000/4,000 Kelvin	<b>MOUNTING</b>	Stainless steel cable and translucent supply line
		<b>CONVERTER</b>	<p>Overload protection</p> <p>Overtemperature protection</p> <p>Short-circuit protection</p> <p>Dimming adjustable for DC-mode</p> <p>Suitable for emergency lighting systems according to EN50172</p>
		<b>OPTIONS</b>	<p>Reflector for 100 %</p> <p>Light spread downward</p>
		<b>WEIGHT</b>	3.3 kg
		<b>LIGHTING CALCULATION</b>	For EULUM data see <a href="http://www.ado-lights.com">www.ado-lights.com</a>

### LIGHT SPREAD | LED-Around | Pendant luminaire

