

LED-GROUND-LEVEL SPOT

Recessed Luminaire

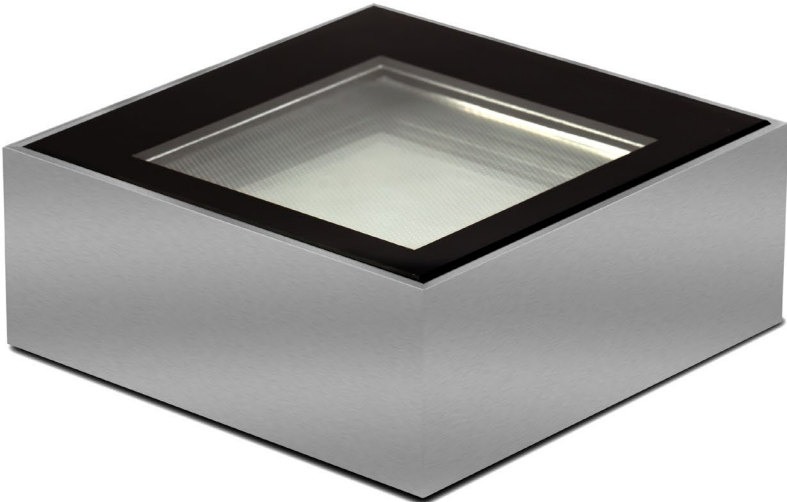
ADO  [®]
by TTC Timmler Technology

LED-GROUND-LEVEL SPOT

Recessed Luminaire

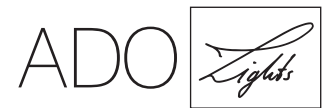


PICTURES



LED-GROUND-LEVEL SPOT

Recessed Luminaire



BASE INFORMATION AND GENERAL TECHNICAL SPECIFICATIONS



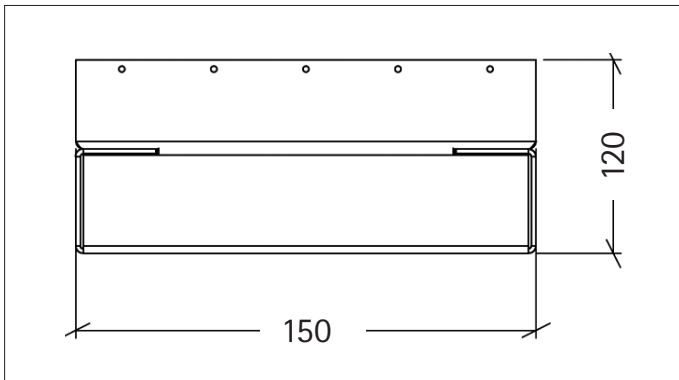
LED-Ground-level spot | Spot on façades

This LED-Ground-level spotlight creates a very positive effect. It can be used to flood façades strikingly with light. Dark outdoor areas are a thing of the past. The LED-Ground-level spot is either buried flush with the ground or it can be visible like an elegant object. Maximum effect but still glare-free illumination: for residential buildings, villas, gardens and castles.

Merkmale

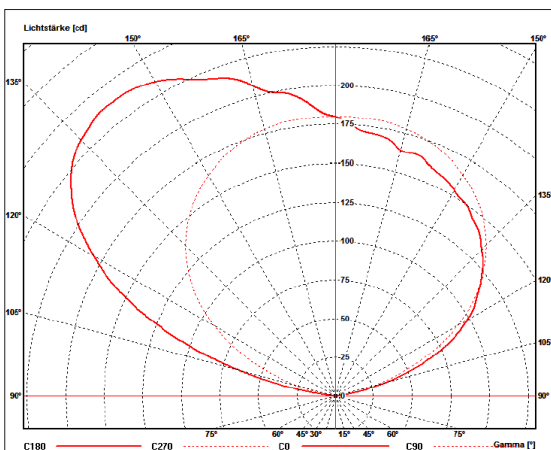
- For private residences, villas, parks, gardens, churches, castles, historic buildings
- Stainless steel housing for exterior use
- Weather-proof
- Beam characteristic symmetrical or asymmetrical
- Glare-free

DIMENSIONS [L X B X H]	150 x 150 x 120 mm
POWER CONSUMPTION	MONOCHROME/WHITE: 16 W RGB/MULTICOLOUR: 6 W
LUMINOUS FLUX	Module efficiency 104 lm/W Luminous flux 1,276 lm Nominal luminous flux 1.604 lm
OPERATING VOLTAGE	24V DC
LIGHT BEAM ANGLE	120° or asymmetrical
SERVICE LIFE	LED and EVG 40,000 hours at 70% of mean luminous flux
COLOUR TEMPERATURE	MONOCHROME/WHITE: 2,700/3,000/4,000 Kelvin optional RGB
CRI	CRI > 85
CONTROL INTERFACE	with ballast compatible to any interface e.g. DMX512, DALI, EIB etc.
IP RATING	IP68
CERTIFICATES	CE, RoHS
LUMINAIRE HOUSING	Stainless steel
COVER	VSG-Safety glass, drive-over design for wheel loads up to 1.5 t
CONVERTER	Overload protection Overtemperature protection Short-circuit protection

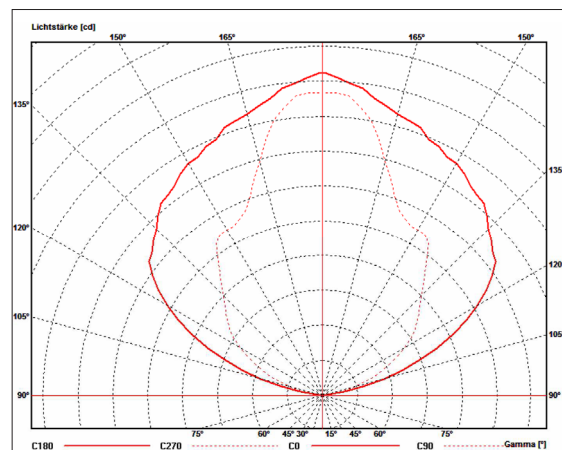


ILLUMINATION LEVEL

Light distribution: asymmetric



Light distribution: symmetric, bilateral light feed



TTC Timmler Technology GmbH
Christian-Schäfer-Straße 8
D-53881 Flammersheim [Cologne/Bonn]
T +49 2255 9212-00
F +49 2255 9212-99
E info@ado-lights.com
I www.ado-lights.com
www.led-luc.com



by TTC Timmler Technology

